

# lefreque

better tuning pure sound



## For String Instruments



# The IntoniQue



electric guitar



Instant Better Intonation & Projection

# lefreque

better tuning pure sound



**The IntoniQue** is an innovative new tonal bridge specifically developed for string instruments.

A well-known characteristic of string instruments is that, once a note is produced, its pitch often becomes unstable and starts to drift.

This instability is something the player has little control over and cannot be corrected simply by practicing more.

## **Why does it happen?**

We believe we have identified the cause of this phenomenon.

When a string is plucked or bowed, the sound first travels into the body of the instrument. After a resonance journey inside the material of the instrument, the sound returns to the string. During this process, the returning sound often comes back at a slightly altered pitch and out of phase, negatively affecting the still-sounding note and causing pitch fluctuations and phase shifting. By installing the IntoniQue on the instrument, the returning sound no longer re-enters the string with an altered pitch. This results in an immediately purer and more stable instrument with improved projection.

## **Key resonance areas in string instruments:**

### **A. The sound hole:**

An important area is around the sound hole or the f-holes of bowed instruments. By creating a bridge from the inside of the soundbox to the outside, we only allow these parts to resonate in phase. This leads to a noticeably more stable and relaxed sound, with pitch fluctuations virtually eliminated.

**Instant Better Intonation & Projection**

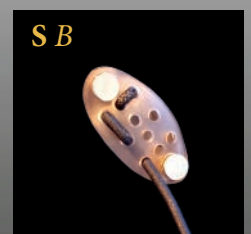
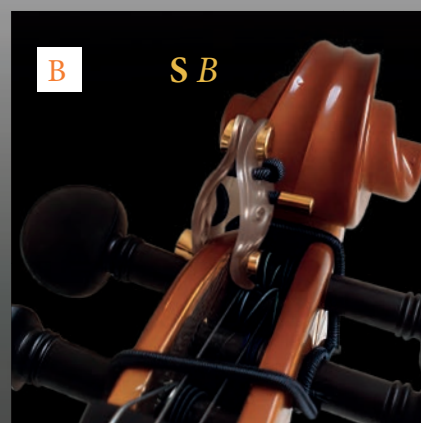
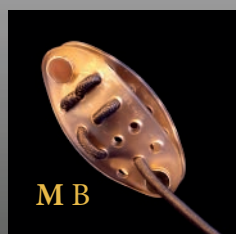
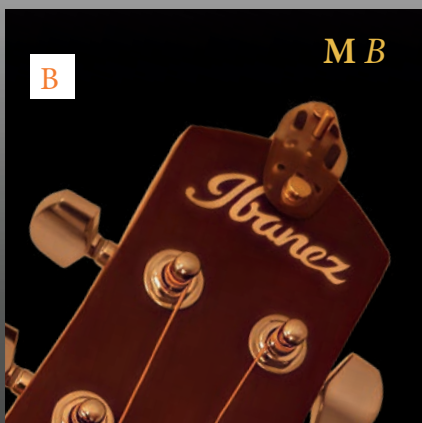
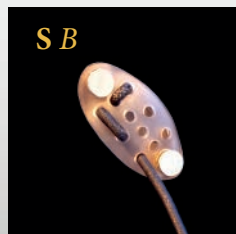
# lefreque

better tuning pure sound



## B. The tuning section:

When an additional bridge is also applied near the tuning section of, for example, a guitar or a violin, the instrument achieves a level of tuning stability previously thought impossible. Also, from this position the instrument will begin to project its tone more effectively.



The intoniQue will initially be available for:  
All acoustic and electric guitars and basses. Celtic harp and pedal harp.  
Violin, viola, cello, and double bass.

Instant Better Intonation & Projection

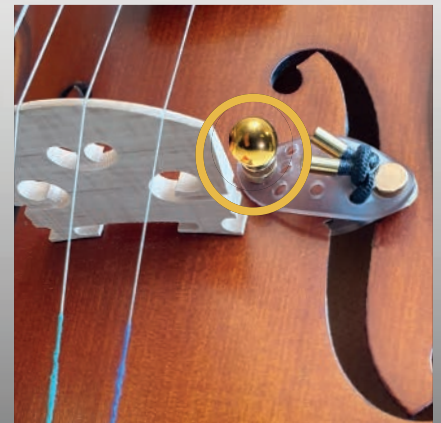
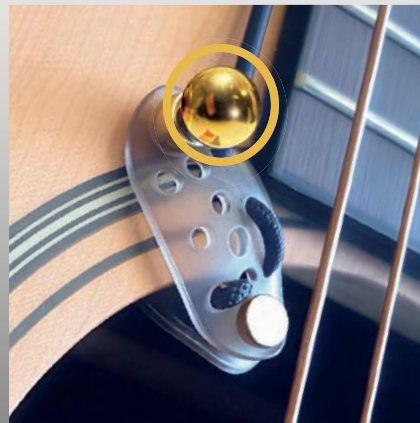




## Booster for the IntoniQue

For the intoniQue, we also offer a Booster that enhances projection without demanding more effort from your playing.

**Be carefull with the booster because it is a powerfull magnet. Slide it on and of the IntoniQue !!!**



The booster is most effective for string instruments with one on each side of the IntoniQue. One on the thick magnet and one on the opposite side of the intoniQue. They come in sets.



Instant Better Intonation & Projection



## IntoniQue also for wind instruments

Last but not least, the IntoniQue can also enhance many wind instruments. By placing the IntoniQue on the bell of the instrument, the resonance inside and outside the bell is only allowed to vibrate in phase.

The result is an instrument that feels easier to play, with increased projection while requiring less playing effort. This is the IntoniQue type SA.

Attach the IntoniQue with the thick magnet on the projective side of the instrument.

Here as well, the Boosters can be added for even greater projection and intonation. Also here the boosters work best if you put one on the thick magnet and one on opposite side of the thick magnet.

